



DIGGER DERRICKS: PROPER USE, MISUSE AND ABUSE

BRIAN SCHNEIDER
 Journeyman Lineman, IBEW Local 1249
 Journeyman Wireman, IBEW Local 728/236
 CUSP
 Powerline Training Consultants
 Founder, LINEWORX

1



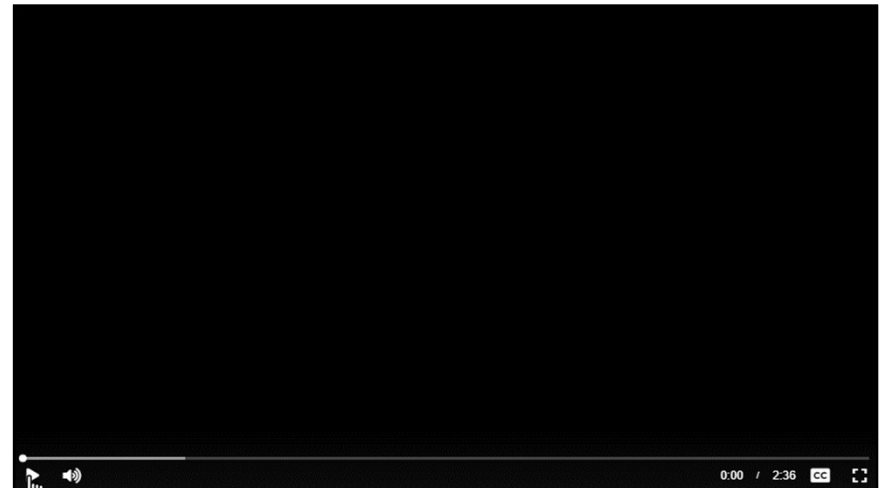
**Powerline
Training Consultants**



2



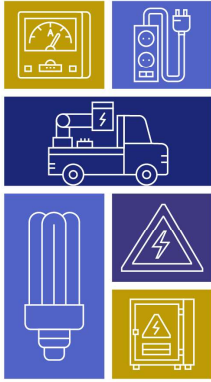
3



4



OHSA Crane Definition



- 1926.1400(a) This standard applies to power-operated equipment, when used in construction, that can hoist, lower and horizontally move a suspended load.

5



OHSA Crane Definition

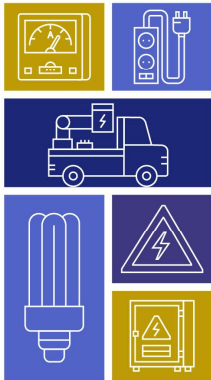


- 1926.1400(a) This standard applies to power-operated equipment, when used in construction, that can hoist, lower and horizontally move a suspended load. Such equipment includes, but is not limited to:

6



OHSA Crane Definition



- 1926.1400(a) This standard applies to power-operated equipment, when used in construction, that can hoist, lower and horizontally move a suspended load. Such equipment includes, but is not limited to: Articulating cranes (such as knuckle-boom cranes); crawler cranes; floating cranes; cranes on barges; locomotive cranes; mobile cranes (such as wheel-mounted, rough-terrain, all-terrain, commercial truck-mounted, and boom truck cranes

7



OHSA Crane Definition



- 1926.1400(a) This standard applies to power-operated equipment, when used in construction, that can hoist, lower and horizontally move a suspended load. Such equipment includes, but is not limited to: Articulating cranes (such as knuckle-boom cranes); crawler cranes; floating cranes; cranes on barges; locomotive cranes; mobile cranes (such as wheel-mounted, rough-terrain, all-terrain, commercial truck-mounted, and boom truck cranes..... derricks; and variations of such equipment. However, items listed in paragraph (c) of this section are excluded from the scope of this standard.

8

NSPC
NECA SAFETY PROFESSIONALS CONFERENCE

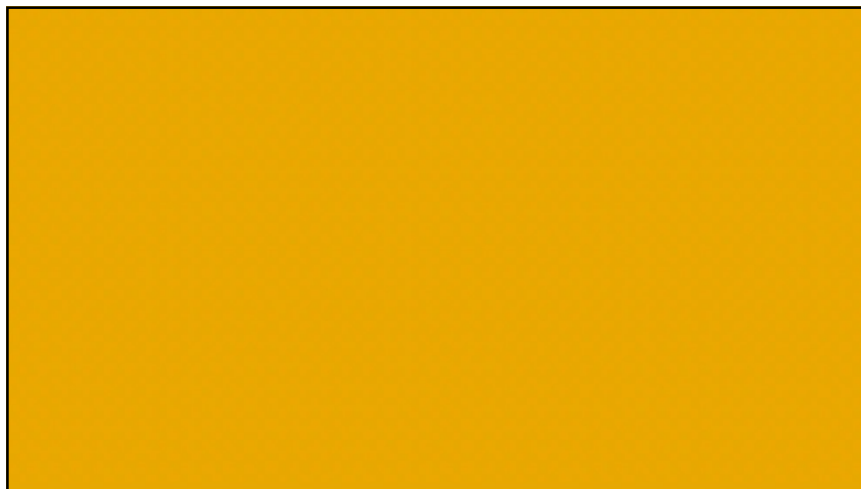
Digger Derricks are cranes.

9

NSPC
NECA SAFETY PROFESSIONALS CONFERENCE

Here is a typical Digger Derrick in action.

10



11

NSPC
NECA SAFETY PROFESSIONALS CONFERENCE

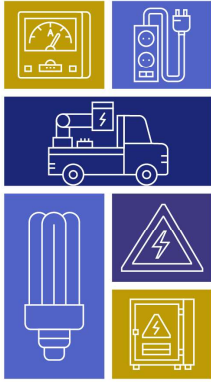
What is a Derrick?

A derrick is powered equipment consisting of a mast or equivalent member

12



What is a Derrick?

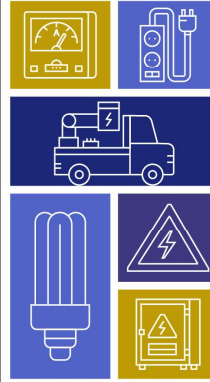


A derrick is powered equipment consisting of a mast or equivalent member that is held at or near the end by guys or braces, with or without a boom, and its hoisting mechanism.

13



What is a Derrick?

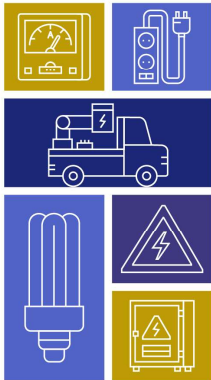


A derrick is powered equipment consisting of a mast or equivalent member that is held at or near the end by guys or braces, with or without a boom, and its hoisting mechanism. The mast/equivalent member and/or the load is moved by the hoisting mechanism (typically base-mounted) and operating ropes.

14



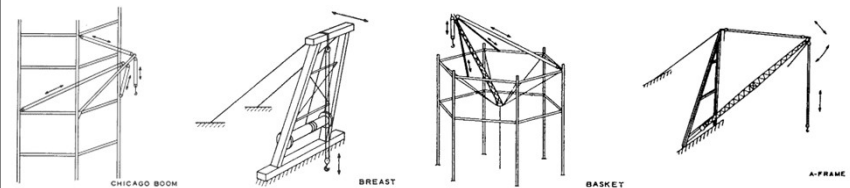
What is a Derrick?



A derrick is powered equipment consisting of a mast or equivalent member that is held at or near the end by guys or braces, with or without a boom, and its hoisting mechanism. The mast/equivalent member and/or the load is moved by the hoisting mechanism (typically base-mounted) and operating ropes. Derricks include: A-frame, basket, breast, Chicago boom, gin pole (except gin poles used for erection of communication towers), guy, shearleg, stiffleg, and variations of such equipment.

15

Examples of Derricks:



16





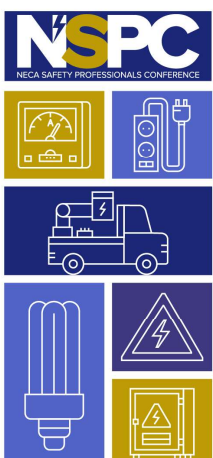

First Terex Digger Derrick

17

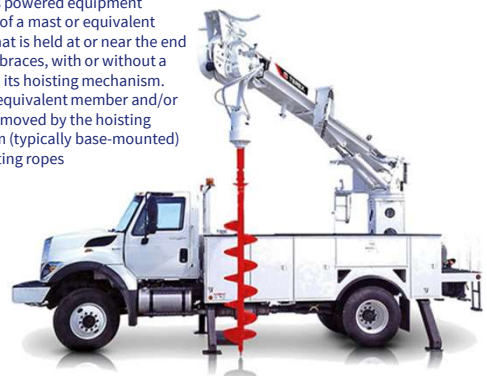


So is a modern Digger Derrick a “Derrick” by OSHA definition?

18



A derrick is powered equipment consisting of a mast or equivalent member that is held at or near the end by guys or braces, with or without a boom, and its hoisting mechanism. The mast/equivalent member and/or the load is moved by the hoisting mechanism (typically base-mounted) and operating ropes



Current Terex Digger Derrick

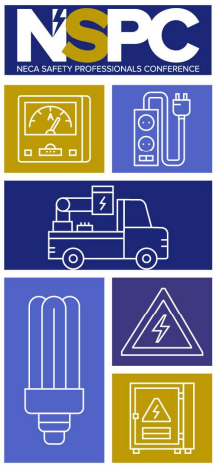
19



Who can operate a crane?

- **1926.1427(a) General requirements for operators.** The employer must ensure that each operator is trained, certified/licensed, and evaluated in accordance with this section before operating any equipment covered under subpart CC
- A license/certification is required.


20




NECA SAFETY PROFESSIONALS CONFERENCE

What qualifies a person to operate a Crane according to OSHA?


21




- Qualification by the U.S. military



22



- Qualification by the U.S. military
 - An employee of the U.S. military is a Federal employee of the Department of Defense or Armed Forces and does not include employees of private contractors.



23



- Qualification by an employer's independently audited program



24



- Qualification by an employer's independently audited program
 - Example: Employee of a utility company
 - An employee can be certified by an independent auditor who is certified to evaluate tests by an accredited crane operator testing organization



25



- Certification by an independent testing organization accredited by a nationally recognized accrediting agency



26



- Compliance with qualifying State or local licensing requirements

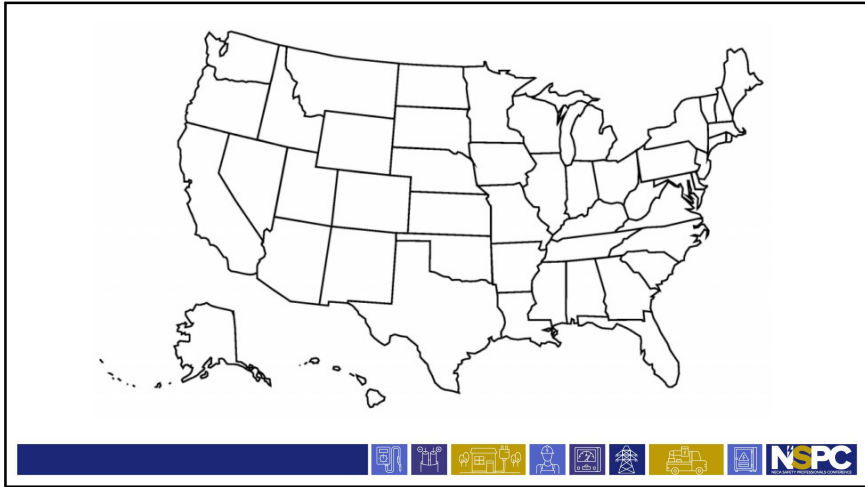


27

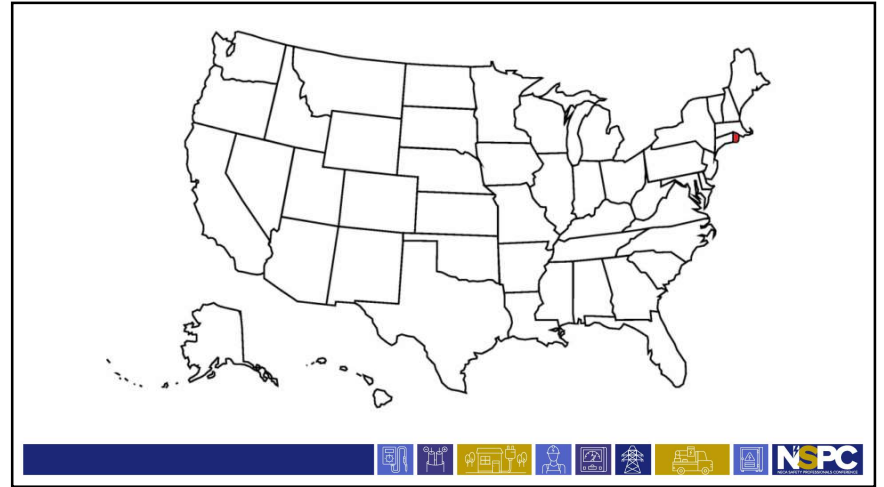
Which states require a state issued crane license?



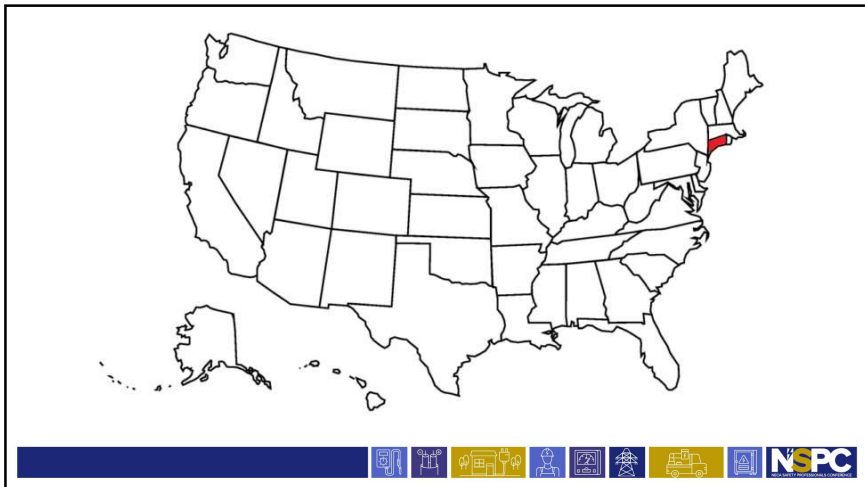
28



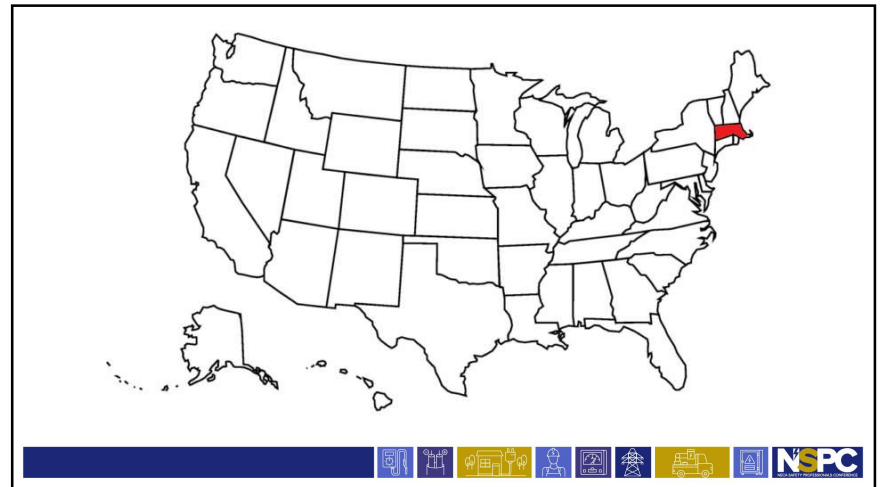
29



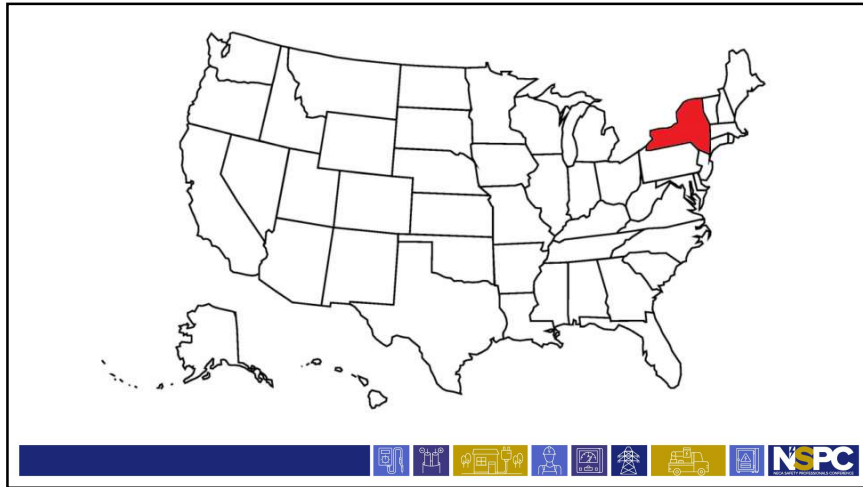
30



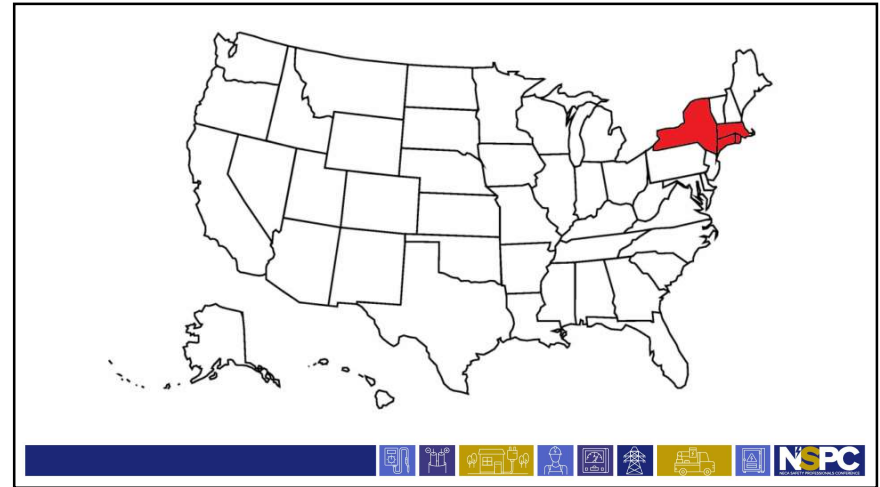
31



32



33



34

OSHA[®]

- Compliance with qualifying State or local licensing requirements









35

1926.1400(c) Exclusions.

- 1926.1400(c)(4) Digger derricks when used for augering holes for poles carrying electric or telecommunication lines, placing and removing the poles, and for handling associated materials for installation on, or removal from, the poles, or when used for any other work subject to subpart V of this part.



36

1926.140

- poles can be removed
- installations of other work
- exclusion part must

- 1926 Subpart V - Electric Power, Transmission and Distribution
 - 1926.950 - General.
 - 1926.951 - Medical services and first aid.
 - 1926.952 - Job briefing.
 - 1926.953 - Enclosed spaces.
 - 1926.954 - Personal protective equipment.
 - 1926.955 - Portable ladders and platforms.
 - 1926.956 - Hand and portable power equipment.
 - 1926.957 - Live-line tools.
 - 1926.958 - Materials handling and storage.
 - 1926.959 - Mechanical equipment.
 - 1926.960 - Working on or near exposed energized parts.
 - 1926.961 - Deenergizing lines and equipment for employee protection.
 - 1926.962 - Grounding for the protection of employees.
 - 1926.963 - Testing and test facilities.
 - 1926.964 - Overhead lines and live-line barehand work.
 - 1926.965 - Underground electrical installations.
 - 1926.966 - Substations.
 - 1926.967 - Special conditions.
 - 1926.968 - Definitions.
 - 1926 Subpart V App A - Appendix A to Subpart V of Part 1926 (Reserved)
 - 1926 Subpart V App B - Appendix B to Subpart V of Part 1926 Working on Exposed Energized Parts
 - 1926 Subpart V App C - Appendix C to Subpart V of Part 1926 Protection From Hazardous Differences in Electric Potential
 - 1926 Subpart V App D - Appendix D to Subpart V of Part 1926 Methods of Inspecting and Testing Wood Poles
 - 1926 Subpart V App E - Appendix E to Subpart V of Part 1926 Protection From Flames and Electric Arcs
 - 1926 Subpart V App F - Appendix F to Subpart V of Part 1926 Work Positioning Equipment Inspection Guidelines
 - 1926 Subpart V App G - Appendix G to Subpart V of Part 1926 Reference Documents

poles for g and s for for any for this of this t



37

1926.1427(a)

poles for g and s for for any for this of this t

Occupational Safety and Health Administration

By Standard Number: 1926.2001, Telecommunications

- Part Number: 1910
- Part Number Title: Occupational Safety and Health Standards
- Subpart: 1910 Subpart II
- Subpart Title: Special Industries
- Standard Number: 1926.2001
- Title: Telecommunications
- CPO Source: OSHA

1926.2001(a) Application

1926.2001(a)(1)

This section sets forth safety and health standards that apply to the work conditions, practices, means, methods, operations, installations and processes performed at telecommunications centers and at telecommunications field installations, which are located outdoors or in building spaces used for such field installations. Center work includes the installation, operation, maintenance, rearrangement, and removal of communications equipment and other associated equipment in telecommunications switching centers. Field work includes the installation, operation, maintenance, rearrangement, and removal of conductors and other equipment used for signal or communication service, and of their supporting or containing structures, overhead or underground, on public or private rights of way, including buildings or other structures.

1926.2001(a)(2)


These standards do not apply:

1926.2001(a)(2)(i)

To construction work, as defined in § 1910.12, nor

1926.2001(a)(2)(ii)


Telecommunications



38

So a Digger Derrick is a crane, but it's excluded from the 1926.1427(a)...


Do I still need a license?



39

OSHA says...

- 1926.1427(a) General requirements for operators.**
The employer must ensure that each operator is trained, certified/licensed, and evaluated in accordance with this section before operating any equipment covered under subpart CC



40

OSHA says...

- **1926.1427(a) General requirements for operators.**
The employer must ensure that each operator is trained, certified/licensed, and evaluated in accordance with this section before operating any equipment covered under subpart CC



41

OSHA says

- **1926.1427(a) General requirements for operators.**
The employer must ensure that each operator is trained, certified/licensed, and evaluated in accordance with this section before operating any equipment covered under subpart CC



42

Except Digger Derricks

- **1926.1400(c)(4)** Digger derricks when used for augering holes for poles carrying electric or telecommunication lines, placing and removing the poles, and for handling associated materials for installation on, or removal from, the poles, or when used for any other work subject to subpart V of this part.



43

Except Digger Derricks

- **1926.1400(c)(4)** Digger derricks when used for augering holes for poles carrying electric or telecommunication lines, placing and removing the poles, and for handling associated materials for installation on, or removal from, the poles, or when used for any other work subject to subpart V of this part.



44

Wait...

Remember this from earlier?



- Compliance with qualifying State or local licensing requirements



45

46



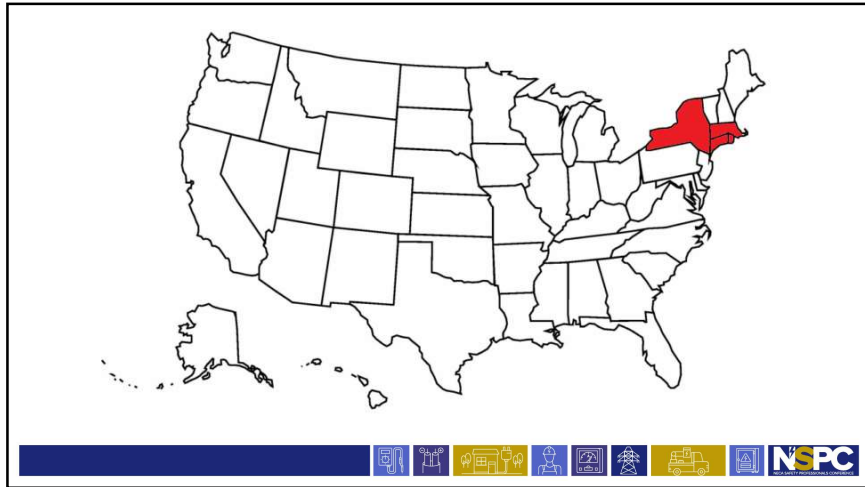
These states have licensing requirements



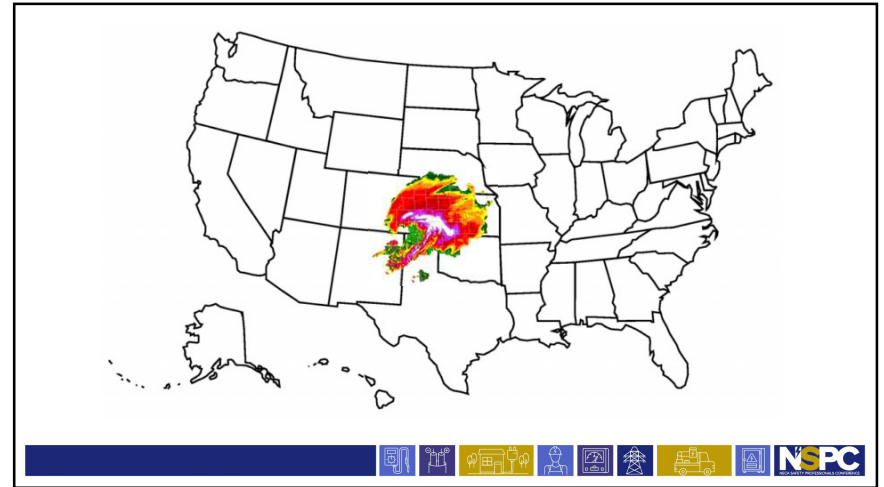
47



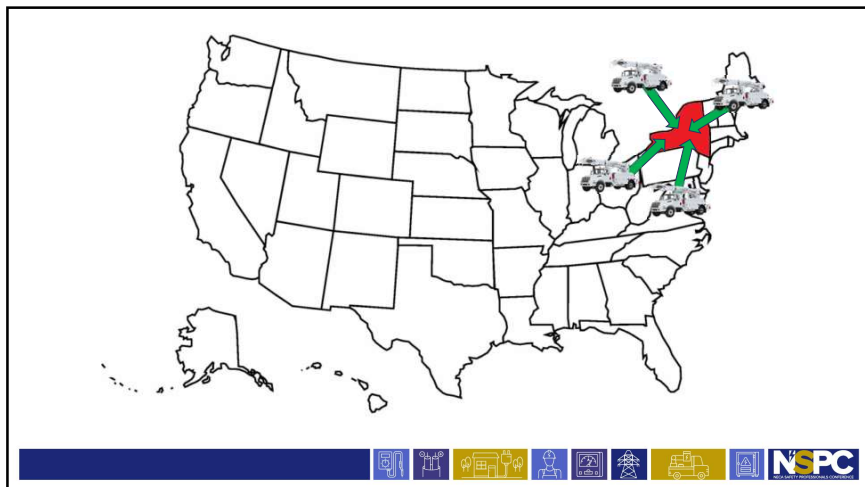
48



49



50



51

During this storm event, how many of the line workers operating digger derricks will be certified operators?



Will they be compliant with the New York laws governing digger derrick operation?

52

We have established that OSHA excluded the Digger Derrick from the crane standards while “doing line work”.

Does OSHA have any requirements for Digger Derricks while “doing line work”?



53

Should there be regulations?

Is operating a Digger Derrick hazardous while “doing line work”?



54



55

Digger Derrick training standards

1926.1427(a) General requirements for operators. The employer must ensure that each operator is trained, certified/licensed, and evaluated in accordance with this section before operating any equipment covered under subpart CC, except for the equipment listed in paragraph (a)(2) of this section.

It's the employer's responsibility to train the Digger Derrick operators.



56

Safe operation:

Cranes require:

- License

Digger Derricks require:

- Training



57

Digger Derrick Training:

1926.1427(b) Operator training. The employer must provide each operator-in-training with sufficient training, through a combination of formal and practical instruction, to ensure that the operator-in-training develops the skills, knowledge, and ability to recognize and avert risk necessary to operate the equipment safely for assigned work.

What does that actually, realistically, real life, on the job, under pressure, look like?

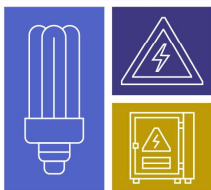


58



DIGGER DERRICK ON THE JOB TRAINING:

- Get up there kid, you're gonna run it today.

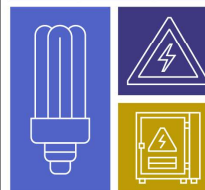


59




DIGGER DERRICK ON THE JOB TRAINING:



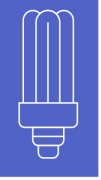


- Get up there kid, you're gonna run it today.
- You seen me do it.



60




DIGGER DERRICK ON THE JOB TRAINING:












- Get up there kid, you're gonna run it today.
- You seen me do it.
- No! Not like that!

61




DIGGER DERRICK ON THE JOB TRAINING:












- Get up there kid, you're gonna run it today.
- You seen me do it.
- No! Not like that!
- WTF!

62




DIGGER DERRICK ON THE JOB TRAINING:












- Get up there kid, you're gonna run it today.
- You seen me do it.
- No! Not like that!
- WTF!
- Are you even watching me?

63



DIGGER DERRICK ON THE JOB TRAINING:

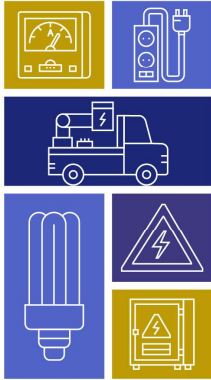






- Get up there kid, you're gonna run it today.
- You seen me do it.
- No! Not like that!
- WTF!
- Are you even watching me?
- Are you trying to kill us?

64



DIGGER DERRICK ON THE JOB TRAINING:



- Get up there kid, you're gonna run it today.
- You seen me do it.
- No! Not like that!
- WTF!
- Are you even watching me?
- Are you trying to kill us?
- @\$%!! Get down from there! I'll do it!

65



DIGGER DERRICK ON THE JOB TRAINING:



- Get up there kid, you're gonna run it today.
- You seen me do it.
- No! Not like that!
- WTF!
- Are you even watching me?
- Are you trying to kill us?
- @\$%!! Get down from there! I'll do it!
- Hey! Don't let him run it. He has no idea what he's doing.

66

Safe operation:

Cranes require:

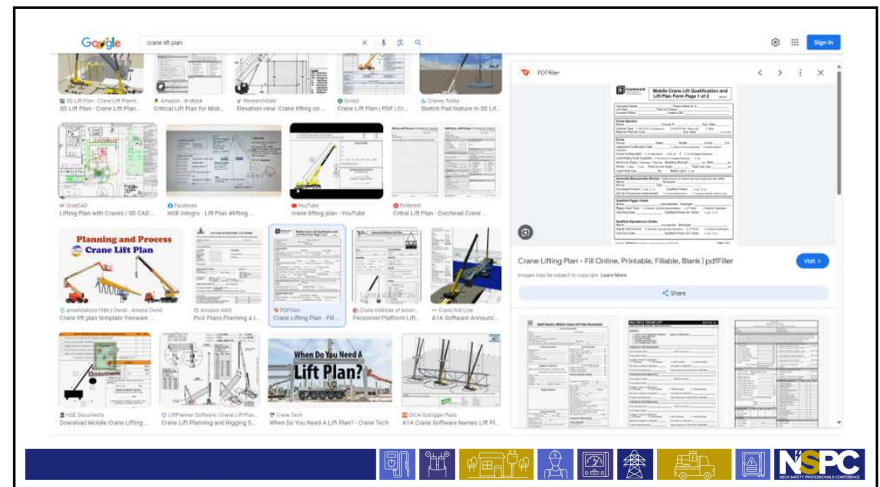
- License
- Lift Plan

Digger Derricks require:

- Training



67



68

CRITICAL LIFT PLAN OVERHEAD CRANE

MOBILE CRANE LIFT PLANNING SHEET

69

Safe operation:

Cranes require:

- License
- Lift Plan

Digger Derricks require:

- Training
- Nothing formal

70

Safe operation:

Cranes require:

- License
- Lift Plan
- Crane Set Up

Digger Derricks require:

- Training
- Nothing formal
- Informal training

The Digger Derrick has already been set up and leveled before testing for the NCCCO Digger Derrick test. The candidate is not asked to perform the task.

71

Safe operation:

Cranes require:

- License
- Lift Plan
- Crane Set Up

Digger Derricks require:

- Training
- Nothing formal
- Informal training

The Digger Derrick has already been set up and leveled before testing for the NCCCO Digger Derrick test. The candidate is not asked to perform the task.

72

Safe operation:

Cranes require:

- License
- Lift Plan
- Crane Set Up
- Confirmation of Weight

Digger Derricks require:

- Training
- Nothing formal
- Informal training



73

Safe operation:

Cranes require:

- License
- Lift Plan
- Crane Set Up
- Confirmation of Weight

Digger Derricks require:

- Training
- Nothing formal
- Informal training
- Test Pick of Load or Confirmation of Load Weight



74

Safe operation:

LIFT CYLINDER CAPACITY

When you consult your Digger Derrick load capacity chart, note that the Digger Derrick lift capacity increases at high boom angles and at shorter distances from the centerline of rotation to the centerline of the load (radius). You must know the weight of load to be lifted and the correct position of the boom so the capacity shown in the load capacity chart is not exceeded.



75

Safe operation:

Altec
D2000A/D3000A/4000A:
Section 4

Boom Raise Capacity Test

The lift cylinder is designed to lift loads within the rated capacity of the hydraulic system, regardless of boom angle or extension. This feature provides a way for the operator to determine if a load is within the rated capacity of the hydraulic system. The operator simply attempts to lift the load slightly, no more than 6 inches (15.24 cm) off the ground, by shifting the boom control handle to the Raise position. If the load can be lifted in this manner, rated capacity of the hydraulic system is not being exceeded. If stability has been maintained, then the load may then be winched up to the required position. If it is necessary to extend the booms with a load, then perform the boom raise capacity test and consider stability along several points of the extension.



76

Safe operation:

Cranes require:

- License
- Lift Plan
- Crane Set Up
- Confirmation of Load Weight
- Minimum Approach Distance

Digger Derricks require:

- Training
- Nothing formal
- Informal training
- Test Pick or Confirm of Load Weight



77

OSHA
1926.1408 table A

Safe operation:

TABLE A—MINIMUM CLEARANCE DISTANCES

Voltage (ac current)	Minimum clearance distance (feet)
10	10
15	15
20	20
over 30,000	35
over 750 to 1,000	10
over 1,000	10

TABLE A = ASSEMBLING

UNQUALIFIED WORKERS



78

Safe operation:

Cranes require:

- License
- Lift Plan
- Crane Set Up
- Confirmation of Load Weight
- Minimum Approach Distance

Digger Derricks require:

- Training
- Nothing formal
- Informal training
- Test Pick or Confirm of Load Weight
- Minimum Approach Distance



79

OSHA
1926.269 table R6

Safe operation:

Table R-6 - Alternative Minimum Approach Distances for Voltages of 72.5 kV and Less¹

Nominal voltage (kV) phase-to-phase	Distance	
	Phase-to-phase exposure	Phase-to-phase exposure
	m	ft
0.050 to 0.300 ²		1.09
0.301 to 0.750 ²		2.07
0.751 to 5.0		2.24
5.1 to 15.0		2.92
15.1 to 36.0		3.22
36.1 to 46.0	0.84	3.22
46.1 to 72.5	1.00	3.29

QUALIFIED ELECTRICAL WORKERS

¹ Employers may use the minimum approach distances in this table provided the worksite is at an elevation of 900 meters (3,000 feet) or less. If employed at elevations greater than 900 meters (3,000 feet) above mean sea level, the employer shall determine minimum approach distances by multiplying the distances in this table by the correction factor in Table R-5 corresponding to the altitude of the work.

² For single-phase systems, use voltage-to-ground.



80

OSHA
1926.269 table R7

Safe operation:

Table R-7 - Alternative Minimum Approach Distances for Voltages of More Than 600 Volts

Voltage range phase to phase (KV)	Minimum approach distance (m)	Minimum approach distance (ft)
72.6 to 121.0		4.66
121.1 to 145.0		5.38
145.1 to 169.0		6.36
169.1 to 242.0		10.10
242.1 to 362.0	11.19	18.11
362.1 to 420.0	4.25	6.81
420.1 to 550.0	5.07	6.24
550.1 to 800.0	6.88	11.38

QUALIFIED ELECTRICAL WORKERS

¹ Employers may use the minimum approach distances in this table provided the worksite is at an elevation of 900 meters (3,000 feet) or less. If employees will be working at elevations greater than 900 meters (3,000 feet) above mean sea level, the employer shall determine minimum approach distances by multiplying the distances in this table by the correction factor in Table R-5 corresponding to the altitude of the work.

² Employers may use the phase-to-phase minimum approach distances in this table provided that no insulated tool spans the gap and no large conductive object is in the gap.

³ The clear live-line tool distance shall equal or exceed the values for the indicated voltage ranges.



81


Safe operation:

Cranes require:

- License
- Lift Plan
- Crane Set Up
- Confirmation of Load Weight
- Minimum Approach Distance

Digger Derricks require:

- Training
- Nothing formal
- Informal training
- Test Pick or Confirm of Load Weight
- Minimum Approach Distance



82


Safe operation:

Cranes:

- Never side load the boom

Digger Derricks:

- How else am I going to move the pole? Set up twice? Three times??



83


Safe operation:

Cranes:

- Never apply torque to boom

Digger Derricks:

- How else am I going to pull the pole?



84



85

What if that doesn't work?

86

NSPC
NECA SAFETY PROFESSIONALS CONFERENCE

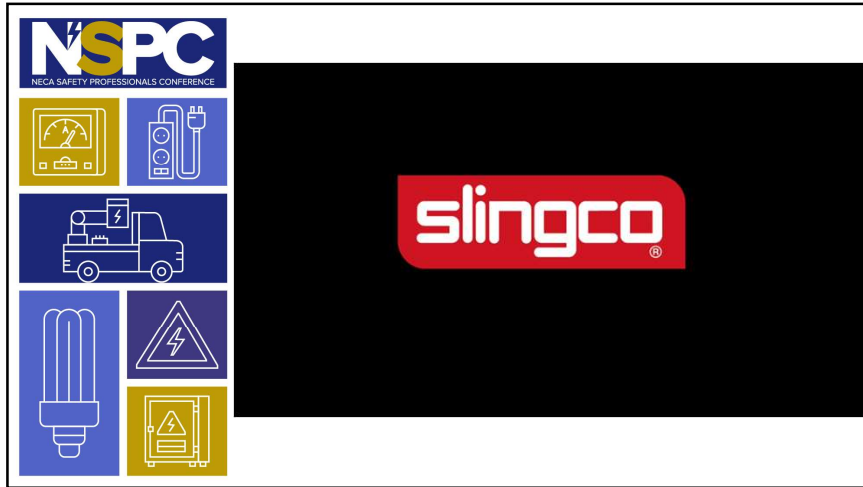
Stiff Leg Method

87

NSPC
NECA SAFETY PROFESSIONALS CONFERENCE

WARNING:
The following video
contains disturbing
images

88



89

When surveyed why they didn't use the pole puller, Journeymen Linemen answered:

- A. It's at the showup
- B. We don't have one on the job
- C. The apprentice isn't here to carry it
- D. What's a pole puller?

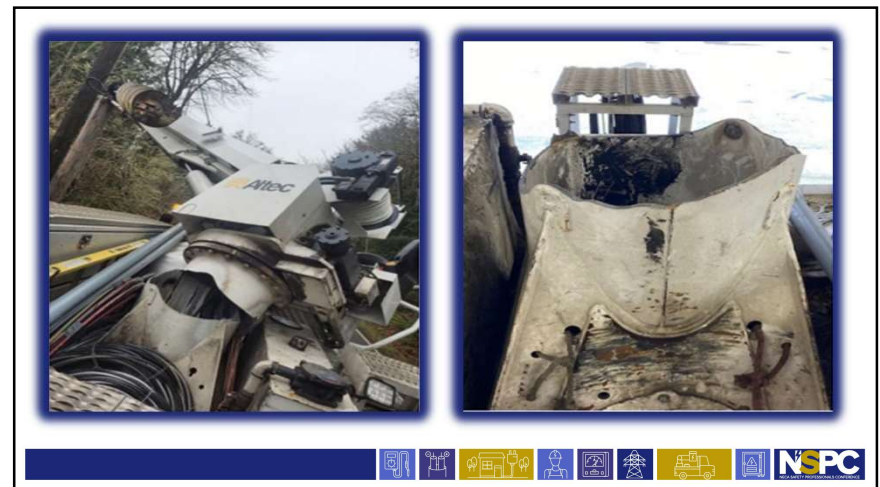
Answer:

- E. None of the above. Linemen don't answer surveys

90

WARNING:
This has happened.

91



92

Safe operation:

Cranes:

- Properly stow the boom

Digger Derricks:

- Properly stow the boom / auger



93



94

Auger stow injury



95

Safe operation:

Cranes:

- Do not contact truck chassis

Digger Derricks:

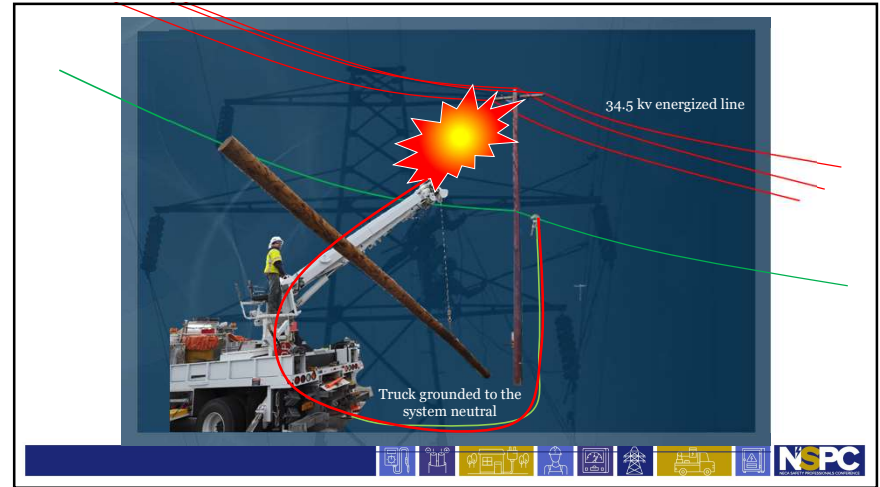
- Do not contact truck chassis



96



97



98

Safe operation:

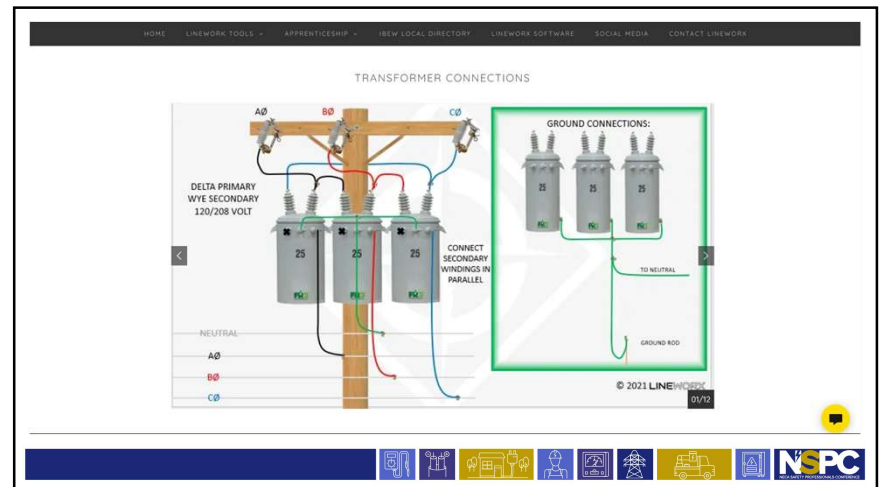
Cranes:

- Maintain MAD

Digger Derricks:

- Maintain MAD / cover energized phases
- Gloves and Sleeves


99



100

HOME | LINEWORX TOOLS | APPRENTICESHIP | NEW LOCAL DIRECTORY | LINEWORX SOFTWARE | SOCIAL MEDIA | CONTACT LINEWORX

OVERHEAD CONDUCTOR SPECIFICATIONS LINKS



ACSR
[GO TO WEBSITE](#)


AAC
[GO TO WEBSITE](#)

AAAC
[GO TO WEBSITE](#)

ACSR/TW
[GO TO WEBSITE](#)

ACAR (AL ALLOY REINFORCED CDR)
[GO TO WEBSITE](#)


ACSS/TW
[GO TO WEBSITE](#)



101

ACSR

Code Word	Size (AWG or kcmil)	Stranding (Al/Al)	Diameter (In.)			Weight Per 1000 Ft. (lbs.)			Content (%)		Rated Strength (lbs.)	Resistance OHMS/1000 Ft.	Allowable Ampacity (amps)		
			Individual Wires	Steel Core	Complete Cable	Al	St	Total	Al	St					
Turkey	6	6/1	5651	5651	5651	198	34	12	30	67.88	32.12	1190	541	356	155
Swan	4	6/1	2824	2824	2824	25	39	16	37	67.67	32.32	1860	403	515	140
Beavertail	4	7/1	2772	103	103	257	39	28	67	58.1	41.8	2360	369	519	140
Spanner	2	6/1	1052	1052	1052	316	82	29	91	67.9	32.1	2850	254	332	184
Spanner	2	7/1	8974	1268	1268	325	62	45	107	56.12	43.88	3460	251	338	184
Robin	1	6/1	1181	1181	1181	354	76	37	115	67.68	32.32	3550	201	268	212
Raven	1/0	6/1	1327	1327	1327	286	99	47	145	67.68	32.32	4360	159	217	242
Owl	2/0	6/1	1489	1489	1489	447	124	69	183	67.68	32.32	5210	126	176	216
Pigeon	3/0	6/1	1672	1672	1672	502	156	74	230	67.67	32.33	6220	100	144	315
Penguin	4/0	6/1	1876	1876	1876	563	197	93	291	67.68	32.32	7350	8795	119	357
Wolverine	200.8	18/1	1217	1217	1217	609	250	99	289	66.43	33.57	6880	6643	6787	449
Partridge	200.8	25/7	1013	8788	2363	642	251	115	367	68.51	31.49	11300	6637	6779	475
Quail	300	26/7	1074	8835	2506	68	283	130	412	68.51	31.49	12700	5667	6693	492
Magpie	336.4	18/1	1267	1267	1267	684	316	89	365	66.43	33.57	8600	5919	5925	519
Lynx	336.4	26/7	1137	8863	2654	72	317	146	462	68.51	31.49	14100	5555	5618	529
Oriole	336.4	30/7	1059	1059	3177	741	318	209	526	60.36	39.64	17200	5922	5613	535
Chickadee	397.5	18/1	1486	1486	1486	743	373	68	431	66.43	33.57	9940	6432	6529	576
Brant	397.5	24/7	1267	8868	2574	772	374	137	511	73.21	26.79	14800	6430	6526	584
Ibis	397.5	26/7	1236	8962	2885	783	374	172	546	68.51	31.49	16300	6428	6523	587
Loon	397.5	30/7	1151	1151	2453	806	375	247	622	60.36	39.64	20200	6425	6619	594
Pelican	477	18/1	1628	1628	1628	814	447	79	517	66.43	33.57	11600	5560	5642	646
Flicker	477	24/7	141	894	2818	846	449	164	614	73.21	26.79	17200	5558	5439	655
Hawk	477	26/7	1364	1053	318	858	449	227	656	68.51	31.49	19500	5556	5436	659
Hee	477	30/7	1261	1261	3753	863	450	256	746	60.36	39.64	23800	6554	6433	666
Osprey	556.5	18/1	1758	1758	1758	879	522	62	603	66.43	33.57	13700	6508	6379	711



102

WOODPOLES.ORG

Home | Why Wood Poles | Wood Crossarms | Issues | Supply | FAQs | Resources | Who We Are

Pole Weight Estimator

Wood Pole Weight Estimator

The Wood Pole Weight Estimator provides a way to determine the range of weights for a wood pole based on its species, class and length. Since the actual weight is dependent on the type of preservative used, the range of weights shown offers an estimate of the final weight.

The Weight Estimator below allows calculation of the range of weights for up to five different species, classes and lengths of poles in a shipment. The range of weights for each pole group and for all of the groups specified are provided.

All weights are in pounds. There is also a metric section, in case you wish to post the weight estimate calculations.

An Excel-based version of the Wood Pole Weight Estimator is available for downloading in the Online Technical Library.


Pole Weight Estimates

Pole No. 1
 Species: [dropdown]
 Class: [dropdown]
 Length: [dropdown]
 No. of Poles: 1
 Est. Weight Range: [input] to [input]

Pole No. 2
 Species: [dropdown]
 Class: [dropdown]
 Length: [dropdown]
 No. of Poles: 1
 Est. Weight Range: [input] to [input]

Pole No. 3
 Species: [dropdown]
 Class: [dropdown]
 Length: [dropdown]
 No. of Poles: 1
 Est. Weight Range: [input] to [input]

Pole No. 4
 Species: [dropdown]
 Class: [dropdown]
 Length: [dropdown]
 No. of Poles: 1
 Est. Weight Range: [input] to [input]



103



LINEWORX



104

Please complete the Online Evaluation



<https://www.surveymonkey.com/r/2024NationalSafetyProfessionalsConference>



105

Citations:

- **OSHA 29 CFR 1926.1400 (c) (4):** Licensing exemption
- **OSHA 29 CFR 1926 Subpart CC 1926.1427:** requirements for licensing
- **OSHA 1926 Subpart CC 1926.1400 (a):** definition of cranes & derricks in construction
- **OSHA 1926 Subpart CC 1926.1436(a) :** definition of a derrick



106

Citations:

- **1926.1400(a)** This standard applies to power-operated equipment, when used in construction, that can hoist, lower and horizontally move a suspended load. Such equipment includes, but is not limited to: Articulating cranes (such as knuckle-boom cranes); crawler cranes; floating cranes; cranes on barges; locomotive cranes; mobile cranes (such as wheel-mounted, rough-terrain, all-terrain, commercial truck-mounted, and boom truck cranes); multi-purpose machines when configured to hoist and lower (by means of a winch or hook) and horizontally move a suspended load; industrial cranes (such as carry-deck cranes); dedicated pile drivers; service/mechanic trucks with a hoisting device; a crane on a monorail; tower cranes (such as a fixed jib, i.e., "hammerhead boom"), luffing boom and self-erecting); pedestal cranes; portal cranes; overhead and gantry cranes; straddle cranes; sideboom cranes; derricks; and variations of such equipment. However, items listed in paragraph (c) of this section are excluded from the scope of this standard.



107